

# Torpedo Pile Monitoring System SMET

## Main Characteristics

Qualified system to be used for PETROBRAS.

Local Content > 90%.

210 hours Battery life.

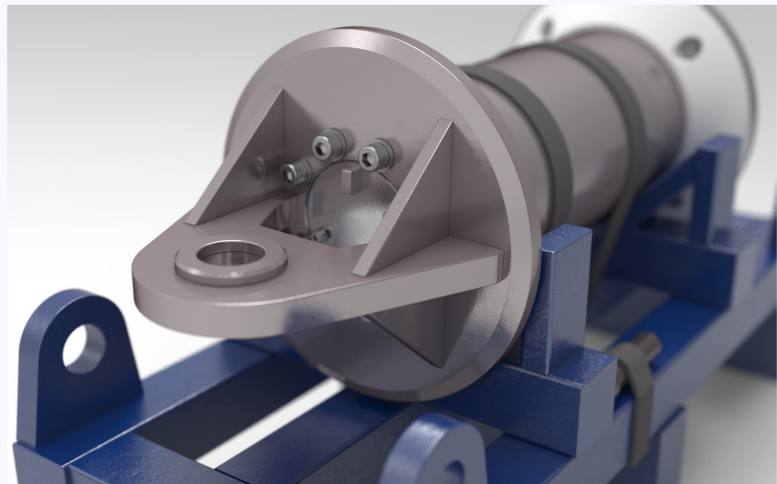
No external connectors improving system reliability.

Report generation.

System at its 3th generation.

Maximum weight < 50kg

operates up to 3000m water depth



The SMET is the result of a development done in a partnership between NAVCON and PETROBRAS in order to create a system capable of measure the maximum velocity, and final angles during the installation of the torpedo piles.

More than 15 years in the market, the SMET is being utilized in several field developments in Brazil, mainly in T-120 operation, but capable of be used in smaller piles as well.

Now in its 3rd generation, the system is following the new technologies and the market demanding always improving its capabilities and reliability.

### Características Mecânicas

Comprimento	695mm
Diâmetro	240mm
Peso aproximado	45kg
Profundidade	3000m

### Sensores

Faixa de medida	$\pm 30^\circ$
Resolução	0,01°
Precisão	0,3°

### Conteúdo Relatório

Detecção de velocidade terminal
Valor velocidade terminal (m/s)
Ângulo final do torpedo

### Operação

Duração Baterias	210h
Lançamentos	06

